

# PR800-7 | Pavement Profiler

## Quick change cutting tool unit

Engine mounted air compressor, two 20 gals (76 L) air reservoirs with flexible air lines, filters, lubricator, safety valve, and quick disconnect fittings. One pneumatic impact hammer and knockout tools included as standard. (shipped in tool box)

## Lights

Operational lights	10
Rear tail lights	2
Amber front flashing lights	2
Backup lights	2
Rotating beacon	1
Dash lights	5

## Operating dimensions

Width	10 ft .375 in (3,057 mm)
Height	.9 ft 10 in (3,000 mm)
Weight	.83,050 lb (37,671 kg)

[With 1,300 gal (4,920 L) water.]

## Transport dimensions

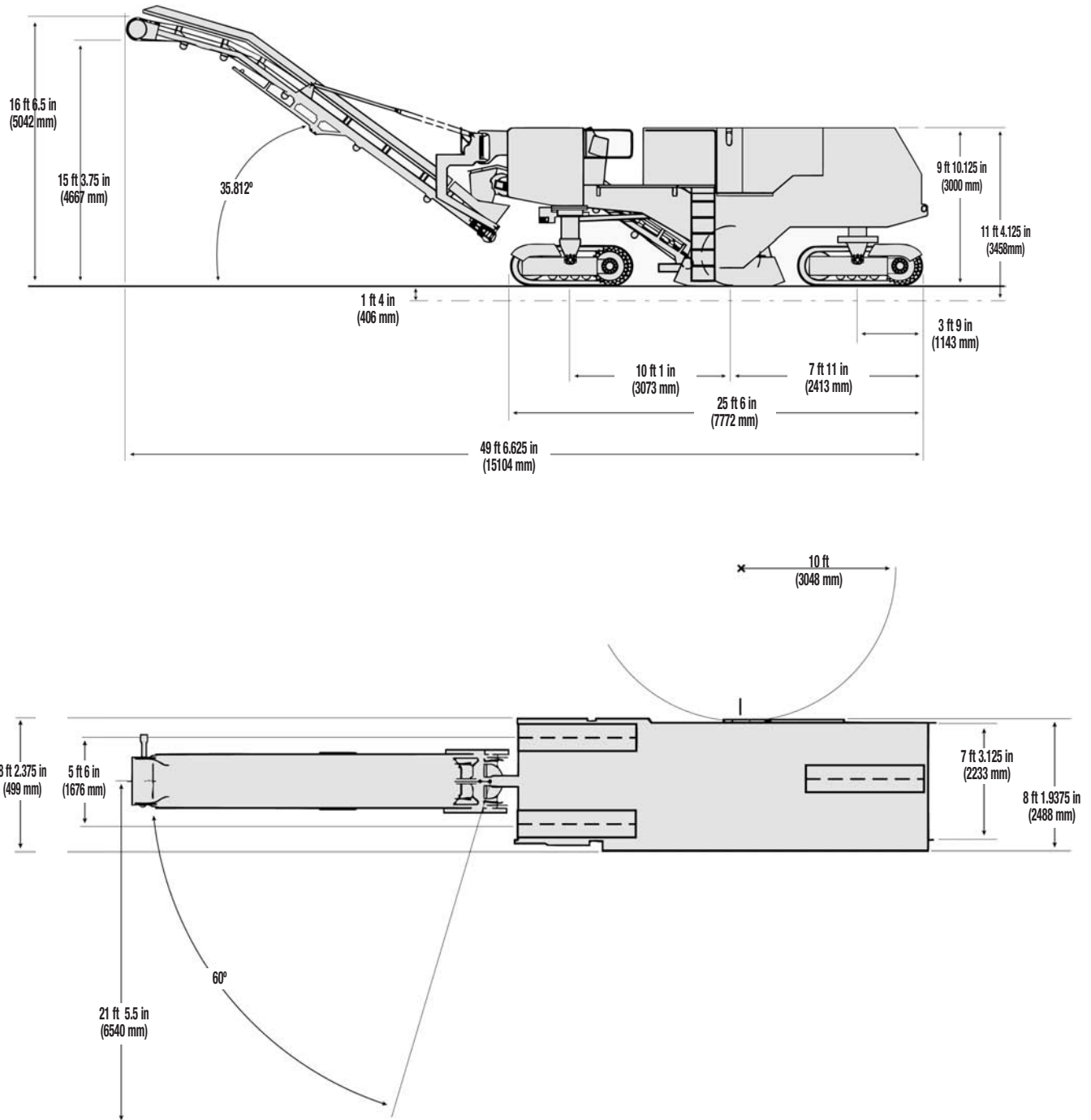
Length	.51 ft 8 in (15,748 mm)
Width	.8 ft 2.375 in (2,499 mm)
Height	.9 ft 10.125 in (3,000 mm)
Weight	.76,000 lb (33,565 kg)

*(Note: dimensions will change depending on optional equipment installed.)*

## Optional equipment

- Electric automated cross slope
- Traveling stringline long wheelbase grade ski arrangement.
- Cutter mandrel with 152 mm/6 in. bolt-on end sections for tapered edge cutting patterns.
- 432 mm/17 in. cutter extension for 2,616 mm/103 in. cut.
- Narrow width cutters (with leg yoke attachment):  
610 mm/2 ft., 914 mm/3 ft., 1,219 mm/4 ft.
- Electric screw jacks.
- Cutter drive sheave kit.
- Rear grade wheel and sensor elevation.
- Noise suppression package.

# PR800-7 | Pavement Profiler



**Important note:** All electrical specifications used herein refer to U.S. standards of voltage and frequency. Any electrical equipment that is factory installed will be compatible with power availability requirements of any customer's country.



www.terexrb.com • 1-888-TEREXRB

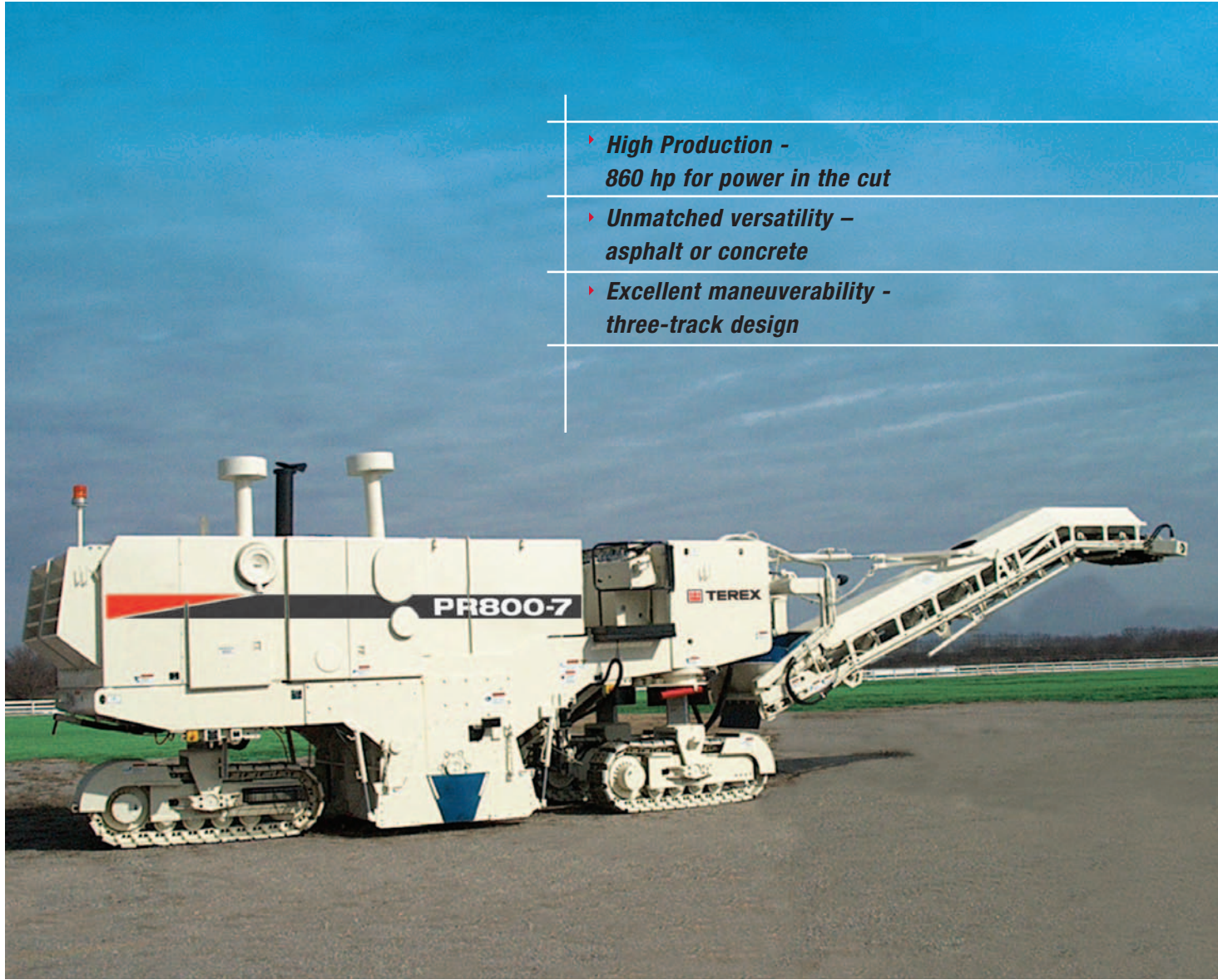


**TEREX | CMI**

**Pavement Profiler | SPECIFICATIONS**

**ROADBUILDING**

- *High Production -  
860 hp for power in the cut*
- *Unmatched versatility –  
asphalt or concrete*
- *Excellent maneuverability -  
three-track design*



# PR800-7

**PAVEMENT PROFILER**

## Caterpillar diesel engine

***Rugged and powerful to meet one of the industrial engine's most difficult demands...pavement profiling.***

- Solid, one-piece block is stress-relieved and metallurgical stabilized to maintain internal dimensions under all operating conditions.
- One-piece head and intake manifold resist twisting and flexing for added block rigidity.
- Large displacement, high torque rise and hydromechanical governor give quick response to varying loads over the full operating range.
- Direct injection fuel system sprays precise fuel patterns into cylinders to keep consumption and emissions low.

## Direct mechanical drive

***Delivers maximum available horsepower where it's needed – in the cut!***

- Power is transferred through air clutch and power bands to the cutting mandrel to maximize breakout force.
- One-piece V-belt power band isolates entire drive train from cutter-generated shock loads.
- Tension adjustment system allows fast, accurate adjustment.
- Direct mechanical drive delivers up to 40% more available horsepower than hydrostatic systems.

## HYDRA-MATION® control system

***Consistent accuracy is the foremost concern in a control system.***

- HYDRA-MATION® control meets +/- .125 in (3 mm) tolerances time after time.
- System is simple to understand and maintain.
- 100% hydraulic grade and slope control.
- Extended 5 year warranty in addition to regular 6 months after and/or 1,000 hour machine warranty.

## Front loading conveyor

***60 degree swing either side of center for unmatched maneuverability and flexibility.***

- 36 in (914 mm) wide high capacity discharge conveyor can be hydraulically positioned 60 degrees either side of center.
- Machine negotiates 10 ft (3,048 mm) inside cutting radius while loading out trucks.
- Design lets profiler, conveyor, and truck track around same radius without costly stop/go confusion.
- Seamless, troughed belt for longer life, better control of fine particle spillage, and less material buildup.
- Water spray and cover is standard on discharge and collecting conveyor.
- Wing-type tail and head pulleys are self cleaning for no-buildup operation.

## Three-track suspension

***Exceptional traction and maneuverability.***

- Three-point, triangular suspension system for great maneuverability.
- Two 7 ft 9.25 in (2,369 mm) x 14 in (356 mm) wide front tracks and one 7 ft 9.25 in (2,369 mm) x 18 in (457 mm) wide rear track gives positive traction on all pavement surfaces.
- Exclusive full-time automation and coordinated steering, as well as independent steering, provide exceptional maneuverability.
- Three-track design gives shorter turning radius and greater maneuverability than four-track machines, particularly when moving into and away from a curb line or around obstacles.

# PR800-7 | Pavement Profiler

## Operator's station

### **Maximizes operator comfort and efficiency.**

- Operator is positioned in front of cutter for fast, efficient cutting in urban applications where seeing obstructions is a must.
- Large, open, full-width operator's station offers excellent visibility to cutter side clearance, conveyor discharge, and work area ahead.
- All operating functions are lever-controlled from a panel at front of machine.
- Automotive-type steering wheels are located on both sides of panel -steers from either side.
- Either-side control of ground drive, conveyor off/on and swing.
- Crucial gauges are highly visible for easy monitoring.
- Handrails and deck plates are arranged for comfort and visibility.

## Cutting Mandrel



### **Highly efficient and versatile.**

- 84.375 in (2,143 mm) cutting width eliminates an extra pass, versus 6 ft (1,829 mm) machines, in meeting today's specification trends.
- Tungsten carbide-tipped moldboard.
- Ability to flush cut curbs and other vertical objects [up to 12 in (305 mm)] increases application potential.
- Pressurized water spray system controls dust and cools cutting teeth for longer wear.
- Efficient material pickup provides near self-cleanup to reduce equipment and labor associated with cleanup.

- Optional narrow-width cutters: 2 ft (610 mm), 3 ft (914 mm), 4 ft (1,219 mm), and 5 ft (1,524 mm) for cuts up to 12 in (305 mm) deep. Cutter assembly and leg yoke attachment mounts directly beneath the profiler's mainframe so that the profiler's working dimensions are unchanged and rear track walks in the cut. The 4 ft (1,219 mm) attachment enable close-tolerance shoulder work. Cutters mount inside cutter housing so left end of cutter discharges on belt conveyor as viewed from rear of machine.
- Optional cutter extension: Provides 103 in (2,616 mm) cutting width. Added to right side of machine extending cutter housing 17 in (432 mm).

## Serviceability

### **Easy routine maintenance maximizes uptime and bottom line.**

- Most major components are modular, designed for easy removal and replacement.
- Large access doors make inspection, adjustment and repairs quick and easy.
- Accessible and clean conveyor transfer point.
- Radiator and oil cooler coils separated for cleaning.
- Replaceable tooth holders, with locator pins to assure accurate positioning.
- High pressure washdown system to hose off radiator, oil cooler, tracks, cutter and conveyors.
- Quick change tool kit with engine-mounted air compressor for pit crew style tooth change.
- Extended capacities for water and fuel, hydraulic tank pre-filtering, sealed undercarriage components, minimal daily service points, and bearings that run in large reservoirs of chassis grease to give more working hours and lower operating cost.

# PR800-7 | Pavement Profiler

## Caterpillar 3412E DITTA diesel engine

Gross horsepower @ 2,100 rpm, 860 hp (641 kW)

Gross horsepower based on SAEJ1349 standard conditions 77°F (25°C) and 100 kPa/29.61 in Hg, using 35 API gravity fuel and engine equipped with fuel, lube oil and jacket water pumps. No derating required up to 3,300 ft (1,006 m) altitude.

Four-stroke-cycle diesel engine with 12 cylinders, 5.4 in (137 mm) bore, 6.0 in (152.5 mm) stroke and 1,649 cu in (27 L) displacement. Air cleaner, dry type, two stages with visual service indicator. 24 volt electric starting system with 60 amp alternator.

## Rotary cutter assembly

84.375 in (2,143 mm) wide x 44 in (1,118 mm) diameter mandrel.

Cutting depth . . . . . up to 12 in (305 mm)

Cutting width . . . . . 84.375 in (2,143 mm)

## Mechanical drive

Wide V-belt power band drives the rotary cutter mandrel through a planetary reducer gearbox inside the cutter drum. Dry disk air clutch mounted directly to engine.

## Cutter teeth

176 tungsten carbide teeth. Teeth snap-in for easy replacement. 176 replaceable steel holders on mandrel with unique dowel location system.

## Floating moldboard

84 in (2,134 mm) wide. Hydraulic float with adjustable down pressure or full hydraulic power raise and lower. Cutting edges with integral tungsten carbide insert are standard. Plunge cuts up to 6 in (152 mm) standard.

## Hydraulic drives

Variable displacement piston motors driving planetary reducers with track sprocket bolted to reducer for tracks. The ground drive features a hydraulically controlled load sensing circuit that is adjustable from the operator station to fit job condition and insures maximum production output. Fixed displacement pumps for conveyers. Air to oil hydraulic cooler.

## Track drive systems

Two 2,369 mm/7 ft. 9.25 in. x 356 mm/14 in. wide front tracks and one 2,369 mm/7 ft. 9.25 in. x 457 mm/18 in. wide rear track. Caterpillar heavy duty crawler track hardware. Variable hydrostatic drive with planetary gear reducer.

## Speeds

Operating range . . . . . 0 - 250 ft/min (0 - 76 m/min)

Travel range . . . . . 0 - 3 mi/min (0 - 5 k/min)

## Steering

Hydraulic manual steering wheel with 4 modes of steering for maximum maneuverability: 1. front only; 2. rear only; 3. front and rear coordinated; 4. crab steering by working the front and rear manual controls simultaneously.

## Reclaiming system

One 13 ft 7 in (4,140 mm) long x 42 in (1,067 mm) wide collecting conveyor. One 25 ft (7,620 mm) long x 36 in (914 mm) wide troughed discharge conveyor with 60 degree swing either side of center. Both conveyors hydraulically driven. Endless cleated belts on both conveyors. Water spray and cover standard on both conveyors. Hydraulic elevation and swing control on discharge conveyor.

## HYDRA-MATION® control system

Two hydromechanical elevation control units (third unit for rear optional). All have manual or automatic modes, controlled individually by the operator.

## Hydraulic oil filtration

Ten-micron filtration on all filtered circuits. Hydraulic holding tank with ten-micron absolute filtration to pre-filter all hydraulic oil to main reservoir.

## Service refill capacities

Fuel tank . . . . . 350 Gal (1,325 L)

Hydraulic oil tank . . . . . 35 Gal (133 L)

Hydraulic reserve tank . . . . . 10 Gal (38 L)

Cooling system . . . . . 40 Gal (57 L)

## Mainframe

Fabricated heavy-duty unitized construction.

## Water system

1,300 gal (4,921 liters) water tank with integral ground fill point at rear of machine. Hydraulically driven centrifugal water pump piped to ten individual spray nozzles in cutter housing. Spray nozzles individually serviceable without entering cutter chamber.